

TECHNICAL DATA SHEET

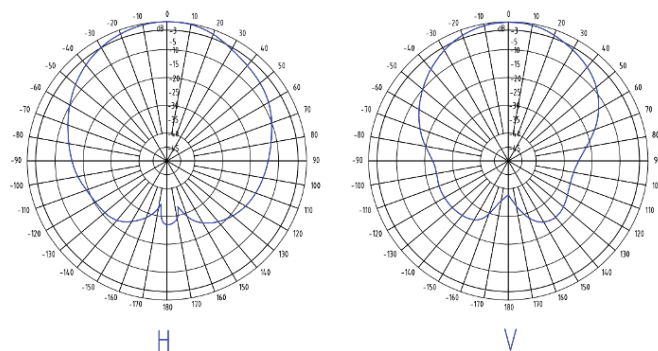
INDOOR ANTENNA PANEL

MODEL NO.

PICASS-ANTENNA PANEL



Directional Pattern



Note: the pictures for reference only, the product in kind prevail.

Technical Specifications

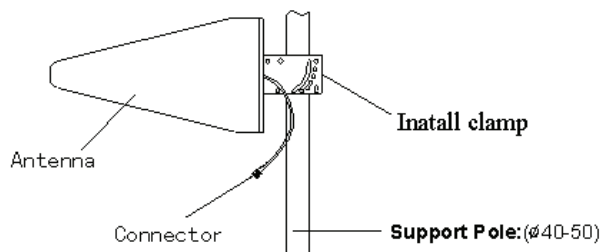
Electrical Specifications

Model	Picass-Antenna Panel
Frequency Range-MHz	698-4000Mhz
Gain-dBi	11
Horizontal Beamwidth- ^o	65/60
Vertical Beamwidth- ^o	50/40
VSWR	≤1.5
Input Impedance-Ω	50
Polarization	v
Front to Back Ratio-dB	20
Maximum Power-W	50
Connector	N-F
Lighting Protection	DC

Mechanical Specifications

Antenna Dimension-mm	430*210*80
Weight-kg	1
Pole Diameter-mm	Φ40-Φ50
Cover Material	ABS
Wind Velocity-m/s	60
Working Temperature- ^o C	-40~+60

Installation Instruction



TECHNICAL DATA SHEET

INDOOR ANTENNA PANEL

MODEL NO.

PICASS-ANTENNA PANEL

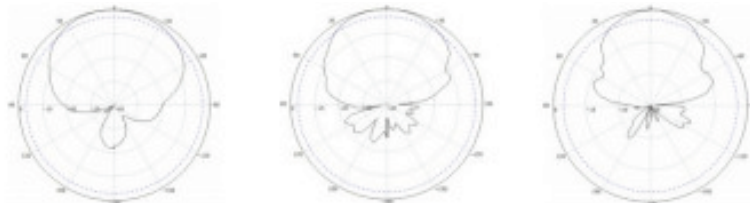
Electrical Specifications

Frequency Range (MHz)	698-4000Mhz	1710-2700
Polarization (deg)	Vertical	
Gain (dBi)	10.0	11.0
Horizontal Beamwidth (deg)	60	55
Vertical Beamwidth (deg)	65	46
VSWR	≤1.5	≤1.5
PIM3 at 2x33 dBm (dBc)	-140	
Impadance (Ω)	50	
Max. Power per Port (W)	100	

Electrical Specifications

Product Dimension, HxWxD (mm)	420x210x65
Product Weicht. w/o Mountina Kit (kg)	1.20
Diameter of the mountina pole	Ø35~Ø50mm
Radom Material and Color	ABS White
Connector Type	N-Female
Operational Temperature (°C)	-40~+55
Operational Humidity (%)	<95
Operational/Max Wind Speed (Km/h)	130/140
Lightning Protection	Direct Ground

Horizontal



Vertical



960MHz

1880MHz

2700MHz